

# Personalized Guidance at Every Step

Genomic Life's program is designed to help catch disease early, inform choices, and tailor guidance by understanding health, family history, and DNA. Join us as we walk through key steps on this journey.

## Enrollment Notification

Members are sent emails to introduce the benefit and how to get started.



## Register or Login

New members set up an account to begin their journey.



## Health Insights

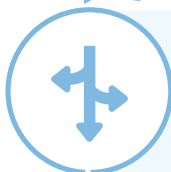
Members are asked health and family history questions.



*Existing members continue on their journey.*

## Suggested Next Steps

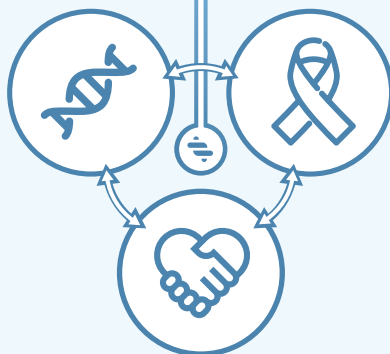
Suggestions provided based on health insights, goals and existing results.



## DNA Screenings

Access DNA screenings to identify personal health risks that may affect health now or in the future.

*Learn more on next page*



## Cancer Navigation

Benefit from guidance provided by expert cancer navigators throughout the cancer journey.

*Learn more on next page*

## Personalized Health Guidance

Members can reach out to navigators, as well as access resources in their accounts. If medically significant findings are identified, experts are available to offer support.

*Learn more on next page*

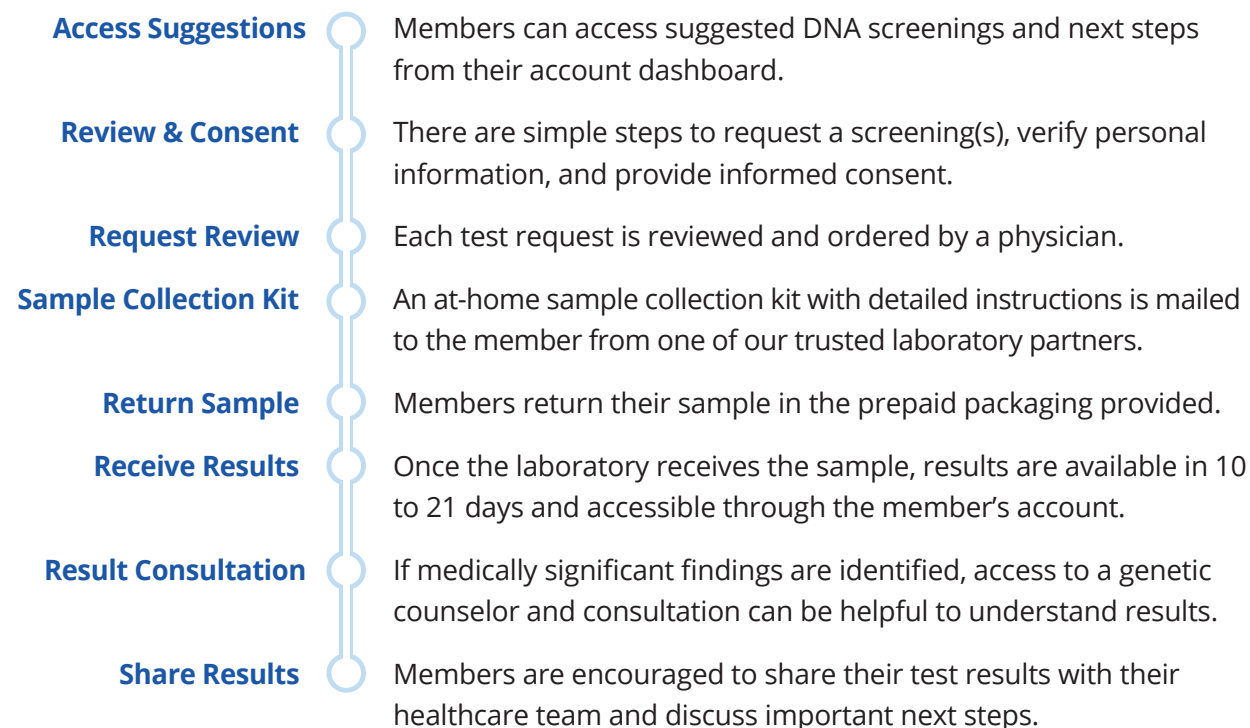
**Want to learn more? Have questions? Visit [genomiclife.com/contact](https://www.genomiclife.com/contact) or call (844) 694-3666**

Genomic Life is not an insurance company. The Genomic Life program is a navigational program and does not provide medical care or payment or reimbursement of payment for treatment costs of any kind. Eligibility information can be provided by your employer. For more information on our Terms & Conditions and Privacy Policy, please visit [www.genomiclife.com](https://www.genomiclife.com)

DOC: MJ-GNR-202506-R1.0

## DNA Screenings: Steps to expect

When members log in or create an account and share their health details, they will receive personalized suggestions for DNA screenings. Members can also reach out to our Navigation Team for assistance and support regarding their program benefits.



## Personalized Health Guidance: How it works

Members can log in or create their accounts to access personalized health screening suggestions based on their age, gender, health history, and DNA information. They also have access to resources, both online and from our Navigation Team, to help optimize health.

## Cancer Navigation: How to access

Members can contact our cancer navigators at their convenience for helpful health discussions. Our navigators take each person's health situation, goals, and needs into account to help remove barriers, provide education, and assist in navigating the complex world of cancer care.

### Cancer navigation is helpful for those:

- Diagnosed with cancer
- Who have had cancer in the past
- Have a strong family history of cancer
- Who are cancer caregivers

### Contact Cancer Navigation:

Call: (844) 694-3666  
Email: [navigation@genomiclife.com](mailto:navigation@genomiclife.com)  
Visit: [www.genomiclife.com/get-started](http://www.genomiclife.com/get-started)